

From Idea to Funding: Insights from a Panel Of NSF Grant Winners



CAHSSA Co-Investigators and Personnel

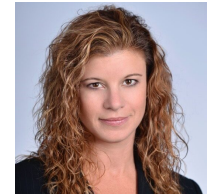
- ***Barbara Endemaño Walker***

- Director of Research Development and Special Assistant to the Executive Vice Chancellor for Diversity Initiatives, UC Santa Barbara



- ***Leslie Ponciano***

- Director of Research Opportunities, California State University Chancellor's Office



- ***Holly Hapke***

- Director of Research Development, School of Social Sciences, UC Irvine



- ***Isha Bhallamudi***

- Doctoral Candidate, Department of Sociology, UC Irvine



- ***Billy Wagner***

- Professor of Health Sciences and Sociology, CSU Channel Islands
Executive Director, Social Science Research & Instructional Council of the CSU





Origin Story

- NSF Build and Broaden Program
- B&B supports fundamental research at minority-serving institutions (MSIs) and encourages research collaborations with scholars at MSIs.
- NSF has received comparatively few grant submissions from MSIs.
 - Between January 1, 2010 to December 31, 2020, roughly 1,000 proposals were funded by the SBE Directorate to UC and CSU campuses. Of these
 - 6% were funded to CSU institutions
 - 62% of these awards went to campuses that are not currently MSIs.

CAHSSA Interventions

1. Webinar Series
2. Mentored Proposal Writing Groups (fall 2022 and 2023)
3. Collaborative proposal writing retreats (winter-spring 2023 and 2024)
4. Social Science Leadership seminar series
5. Research projects
 1. Characterizing Hispanic-serving social science survey
 2. Content analysis of NSF proposal review

Meet our Panelists

Kim Yi
Dionne

Associate
Professor



Department of Political Science

UC Riverside

NSF Project: Build and Broaden 3.0: Assessing the Effects of a Publicly Engaged Scholarship

Pablo Gomez

Associate
Professor



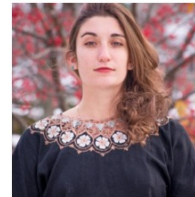
Department of Psychology

Cal State University San Bernardino

NSF Projects: Reviewer Zero: Changing the Culture of Peer Review to Increase Diversity, Equity, and Inclusion; and Build and Broaden 2.0: Interaction of sensory and response processes in decision making

Carly
Offidani-
Bertrand

Associate
Professor



Department of Human Development

Cal State University San Marcos

NSF Project: Build and Broaden: Growing Capacity in Research Examining Entrepreneurship

Paola
Ometto

Associate
Professor



Department of Management

Cal State University San Marcos

NSF Project: Build and Broaden: Growing Capacity in Research Examining Entrepreneurship